

## West Bank Teen Center

- **Sat. June 3 - SRP Kick-Off, 10am-2pm**
- **Mon. June 5 - D.I.Y. Craft: Marble Magnets\***
- **Tues. June 6 - Makey Makey Tuesday, 3-4PM**
- **Thurs. June 8 - Teen Coloring Pages, 3:30-4:30PM**
- **Mon. June 12 - Manga Workshop, 2:30pm**
- **Mon. June 12 - D.I.Y. Craft: Felt Card Holder\***
- **Tues. June 13 - Makey Makey Tuesday, 3-4PM**
- **Wed. June 14 - Cupcake Wars!, 3:30-4:30PM**
- **Sat. June 17 - South Louisiana Anime Club, 12-5pm**
- **Mon. June 19 - Matt Noel, 3pm**
- **Mon. June 19 - D.I.Y. Craft: Personalized Bracelets\***
- **Tues. June 20 - Makey Makey Tuesday, 3-4PM**
- **Mon. June 26 - D.I.Y. Craft: Magnetic Bookmarks\***
- **Tues. June 27 - Makey Makey Tuesday, 3-4PM**
- **Mon. - Fri. July 10 - 14 - NOVAC Camp 1-4PM** Registration Required for Camp (10 max)
- **Sat. July 8 - South Louisiana Anime Club 12-5pm**
- **Mon., July 10 - D.I.Y. Craft: Felt Butterflies\***
- **Tues. July 11 - Makey Makey Tuesday, 3-4PM**
- **Sat. July 15 - Manga Workshop, 2:30pm**
- **Thurs. July 13 - Football Ice Cream Sandwiches, 2:30-3:30PM**
- **Mon. July 17 - D.I.Y. Craft: Beaded Keychain\***
- **Tues. July 18 - Makey Makey Tuesday, 3-4PM**
- **Wed. July 19 - Teen Talent Show Auditions, 2-4PM**
- **Thurs., July 20 - Candi Sushi, 2:30-3:30pm**
- **Mon. July 24 - D.I.Y. Craft: Washer Pendant\***
- **Tues. July 25 - Makey Makey Tuesday, 3-4PM**

*\*D.I.Y. Crafts begin at 3pm and last until supplies run out*

In accordance with provisions of the American with Disabilities Act Amendments Act of 2008, as amended, Jefferson Parish shall not discriminate against individuals with disabilities on the basis of disability in its services, programs or activities. If you require auxiliary aids or devices, or other reasonable accommodation under the ADA Amendments Act, please submit your request to the ADA Coordinator at least forty-eight (48) hours in advance or as soon as practical. A seventy-two (72) hour advanced notice is required to request Certified ASL interpreters. ADA Coordinator/Office of Citizens with Disabilities, 1221 Elmwood Park Blvd., Suite 210, Elmwood, LA 70123, (504) 736-6086, ADA@jeffparish.net

## East Bank Teen Center

- **Sat. June 3 - SRP Kick-Off, Teen Celebration, 1-3PM**
- **Mon. June 5 - Make Me Craft: Marbling Art, 2:30PM**
- **Tues. June 6 - Teen Design Challenge: Ping Pong Ball Rollercoaster, 2PM** Registration Required for Challenge (16 max)
- **Tues. June 6 - Teen Scene: JPL Acting Crew, 4PM**
- **Wed. June 7 - Life Size Board Games, 2PM**
- **Mon. - Fri. June 12 - 16 - NOVAC Camp 1-4PM** Registration Required for Camp (10 max)
- **Tues. June 13 - The Inklings: Teen Writers Group, 4:30PM**
- **Thurs. June 15 - Teen Anime Club, 4:30PM**
- **Mon. June 19 - Teen Iron Chef, 2:30PM** Registration Required for Iron Chef (16 max)
- **Tues. June 20 - Teen Design Challenge: Popsicle Bridges, 2PM** Registration Required for Challenge (16 max)
- **Tues. June 20 - Teen Scene: JPL Acting Crew, 4PM**
- **Wed. June 21 - Maker Lab, 2PM** Registration Required (16 max)
- **Thurs. June 22 - Make Me Craft: Crayon Candles, 2:30PM**
- **Mon. June 26 - Manga Workshop, 2PM**
- **Tues. June 27 - Teen Writers Group, 4PM**
- **Wed. June 28 - Maker Lab, 2PM** Registration Required (16 max)
- **Thurs. June 29 - Teen Anime Club, 4PM**
- **Mon. July 10 - Make Me Craft: Recycle Book Art, 2:30PM**
- **Tues. July 11 - Teen Design Challenge: Egg Drop Challenge, 2PM** Registration Required for Challenge (16 max)
- **Tues. July 11 - Teen Writers Group, 4:30PM**
- **Wed. July 12 - Maker Lab, 2PM** Registration Required (16 max)
- **Thurs. July 13 - Teen Cosplay Day, 3PM**
- **Wed. July 19 - Maker Lab, 2PM** Registration Required (16 max)
- **Thu. July 20 - Life Size Board Games, 2PM**
- **Mon. July 24 - Manga Workshop, 2PM**
- **Tues. July 25, Teen Talent Show Auditions, 2-4PM**
- **Wed. July 26 - Maker Lab, 2PM** Registration Required (16 max)
- **Tue. July 25 - Teen Talent Show Auditions, 2-4PM**
- **Wed. July 26 - Teen Talent Show Auditions, 6-8PM**
- **Thurs. July 27 - Teen Anime Club, 4-5PM**
- **Sat. July 29 - Teen Talent Show, 2-4PM**

**Looking for more Teen programs?  
Visit [srp.jplibrary.net](http://srp.jplibrary.net) to find out  
what programs are happening at  
the library nearest you!**

version 3

## 2017 Teen Summer Reading Program



USERNAME:

---

PASSWORD:

---



# JPL

**Jefferson Parish Library**  
[www.jplibrary.net](http://www.jplibrary.net)

# BUILD *a Better* WORLD™

June 3-August 5, 2017

## HOW DO I PARTICIPATE?

Sign up online at [srp.jplibrary.net](http://srp.jplibrary.net) or at any JPL location. Teens in grades 6-12 can participate in Teen Summer Reading.

## HOW DOES IT WORK?

After you sign up, read for **20 HOURS** or do a combination of reading and completing tasks (each task counts as 1 hour) to collect your prizes and enter the grand prize raffle! Some tasks can only be completed one time.

## WHAT COUNTS AS READING?

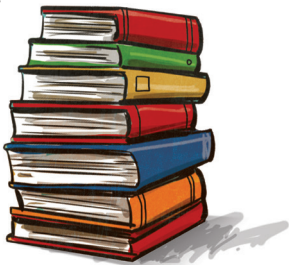
You may read anything you like, as long as it is for one hour. All books read must be age appropriate.

## WHAT ARE THE PRIZES?

Teens will receive a book bag, a "Fight Evil Read Books" bumper sticker, and a grand prize raffle ticket. Each additional 20 hours completed earns a bonus prize and a another grand prize raffle ticket! All prizes are while supplies last, so be sure to complete early.

## WHAT IS THE GRAND PRIZE?

You could win one of four \$50 Gift Cards (Amazon, Barnes & Noble, iTunes, AMC). You chose which raffle to enter!



# 2017 Teen Summer Reading

Read for 20 hours or complete a combination of reading for hours and completing tasks. Tasks can be found at the bottom. Each task counts as 1 hour read.

1st Hour	2nd Hour	3rd Hour	4th Hour	5th Hour
6th Hour	7th Hour	8th Hour	9th Hour	10th Hour
11th Hour	12th Hour	13th Hour	14th Hour	15th Hour
16th Hour	17th Hour	18th Hour	19th Hour	20th Hour

## Tasks:

Attend a program  
Like Teen Facebook\*  
Get to know the library staff\*  
Follow us on Instagram\*  
Checkout a DVD

Try a new language using Mango  
Download a FREE song from Freegal  
Visit the library\*  
Explore Hoopla digital at [jplibrary.net](http://jplibrary.net)  
Download an eBook from Overdrive

\* Denotes one time only tasks